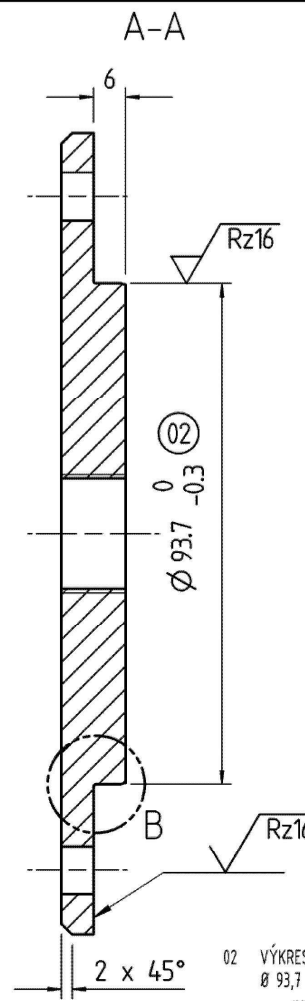
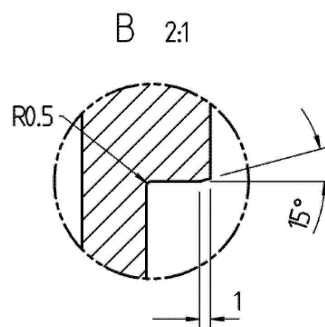


DĚR Ø PRŮM. 9 mm ROVNOMĚRNĚ
ROZMÍSTĚNÝCH NA ROZTEČNÉ
KRUŽNICI Ø PRŮM. 126 mm
8 Holes Ø 9 equi
spaced on a Ø 126 PCD



02 VÝKRESOVÉ MEZE BYLY V HRUBÝCH TOLERANCÍCH
Ø 93,7 -0,3 BYL Ø94 -0,36/-0,71
TLOUŠŤKA MATERIÁLU PŘIDÁNA DO SPEC. MAT.

VOP s.p.
Dukelská 182
742 01 Šumperk Nového Jičína
DIK CZ00000463
000008-183 12.9.2013
Adam Šimíček

02	DRAWING BORDER WAS GT COARSE. Ø 93,7 -0,3 WAS Ø94 -0,36/-0,71 MATERIAL THICKNESS ADDED TO MATERIAL SPEC.	T19344		
General tolerance (GT) in mm		Index	alteration	Change no
Size range		Inspection dim.		Fit
Auxiliary dim.		Auxiliary dim.		Toler.
GT fine		Date	Name	Blank no:
L 0,2 0,5 0,8 2 4		20.10.2009	PLlewelyn	02
≤ 0,1 0,2 0,4 1 2		Checked	20.10.2009	PLlewelyn
Lengths (L) and angle (L/Δ) = ±GT		Auth'd	22.10.2009	A.Walker
Tolerance Symbols ISO 1101		M.check	22.10.2009	A.Walker
○ roundness = 1/2σ-Tol.		Material: EN 10025 S275 JR (12THK)		
□ straightness/flatness = GT		Title:		
◎ concentricity/run out = GT		cover		
≡ symmetry = GT		Tank Drain		
/ / parallelism = GT		Drawing number		
⊕ position = GT		3594070816		
Languages:		PROD. Scale 1:1		
en		Sheet: 1 of 1		
Confidential document		Repl.		
Refer to protection notice ISO 16016		Orig.		